



The Next Evolution of Personal AI

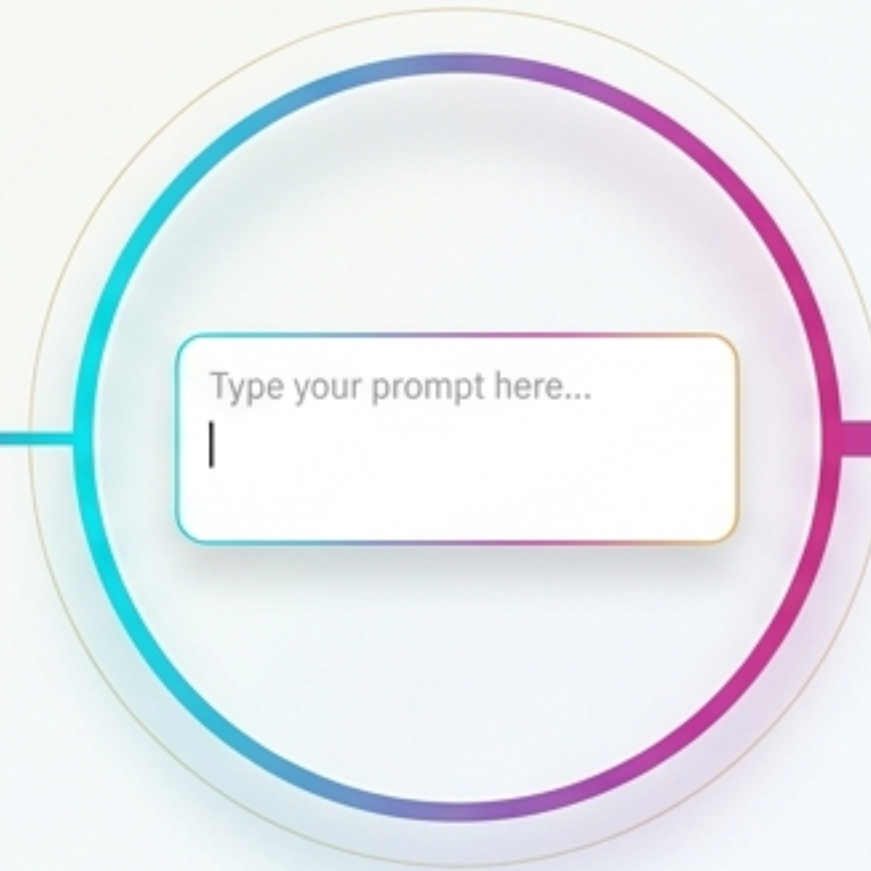
Introducing ASUM: The Privacy-First
Behavioral Operating Layer.

The Evolutionary Arc of Personal Computing



Static Apps (Past)

Fragmented Ecosystems. High friction, manual execution.



Prompt-Based Chatbots (Present)

Reactive Intelligence. Waits for prompts, lacks behavioral context, confined to the browser.



Autonomous AI Operating Layers (The Future)

Proactive Digital Shadows. Learns behavior, navigates native apps autonomously, executes 'No-Code by Voice'.

The ASUM Philosophy



A - Adaptive

A machine learning-driven brain that continuously adapts to user routines, typing patterns, and communication logic. Not a static rule engine.



S - Shadow

A 'Digital Shadow' that acts as an invisible replica of the user. It responds, schedules, and executes tasks exactly how the user would.



U - Universal

Universal access across the Android ecosystem. Transcends specific app silos to orchestrate workflows natively across multiple platforms.



M - Memory

A privacy-first local memory graph. Remembers past context, relationships, and behavioral embeddings to inform future autonomous execution.

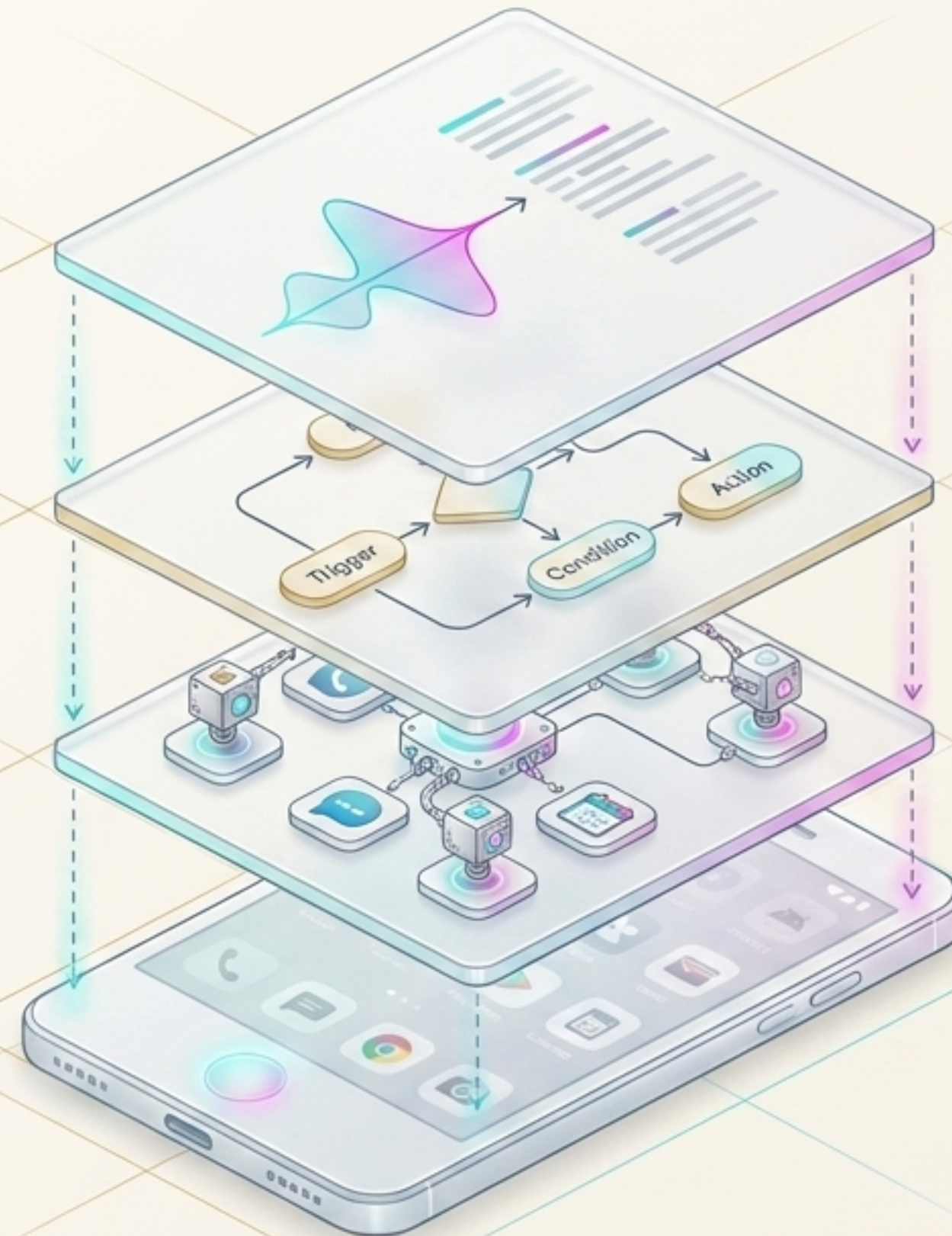
Market Landscape: Commodity vs. Moat

Dimension	Traditional Chatbots	Legacy Automation	ASUM (AI Operating Layer)
Trigger Mechanism	Manual text prompts.	Rigid pre-set webhooks.	Conversational intent & behavioral anticipation.
Execution Level	Confined to browser/ chat window.	Cloud APIs only.	Deep Android OS native execution.
Memory Architecture	Ephemeral cloud sessions.	No personal memory.	Local-first Behavioral Memory Graph.
Market Value	Commodity LLM.	Fragile rule sets.	Defensible Personal Moat.

Anatomy of the Digital Shadow: Core Capabilities



Hybrid 3-Layer Automation Architecture



1. Voice Intent Layer

Captures natural language commands (e.g., "When a client pays, send a thank you via WhatsApp").

2. Workflow Generation Layer

LLM parses XML accessibility trees to identify UI targets without rigid APIs.

3. Execution Layer

Bypasses sandboxes via Android Accessibility Service. Taps, swipes, and types natively.

Data Architecture: The Local-First Advantage



The Vulnerable Cloud Model

Standard AI assistants pipe sensitive behavioral data, personal relationships, and device usage logs to central servers, creating massive liability and privacy risks.



The ASUM Local-First Shield

Memory graphs, behavioral embeddings, and sensitive parameters are stored securely on-device. Google Vertex AI is queried ONLY for stateless logical inference. Your AI brain lives inside YOUR phone.

The Privacy-First Consent Funnel



Intent & Liveness

Validates user presence via Voice Biometrics & Liveness Check.

Identity Validation

For deep tasks (financial/legal), requires NID validation and Legal Agreement.

Suggestive Approval

ASUM drafts the action and awaits explicit user consent.

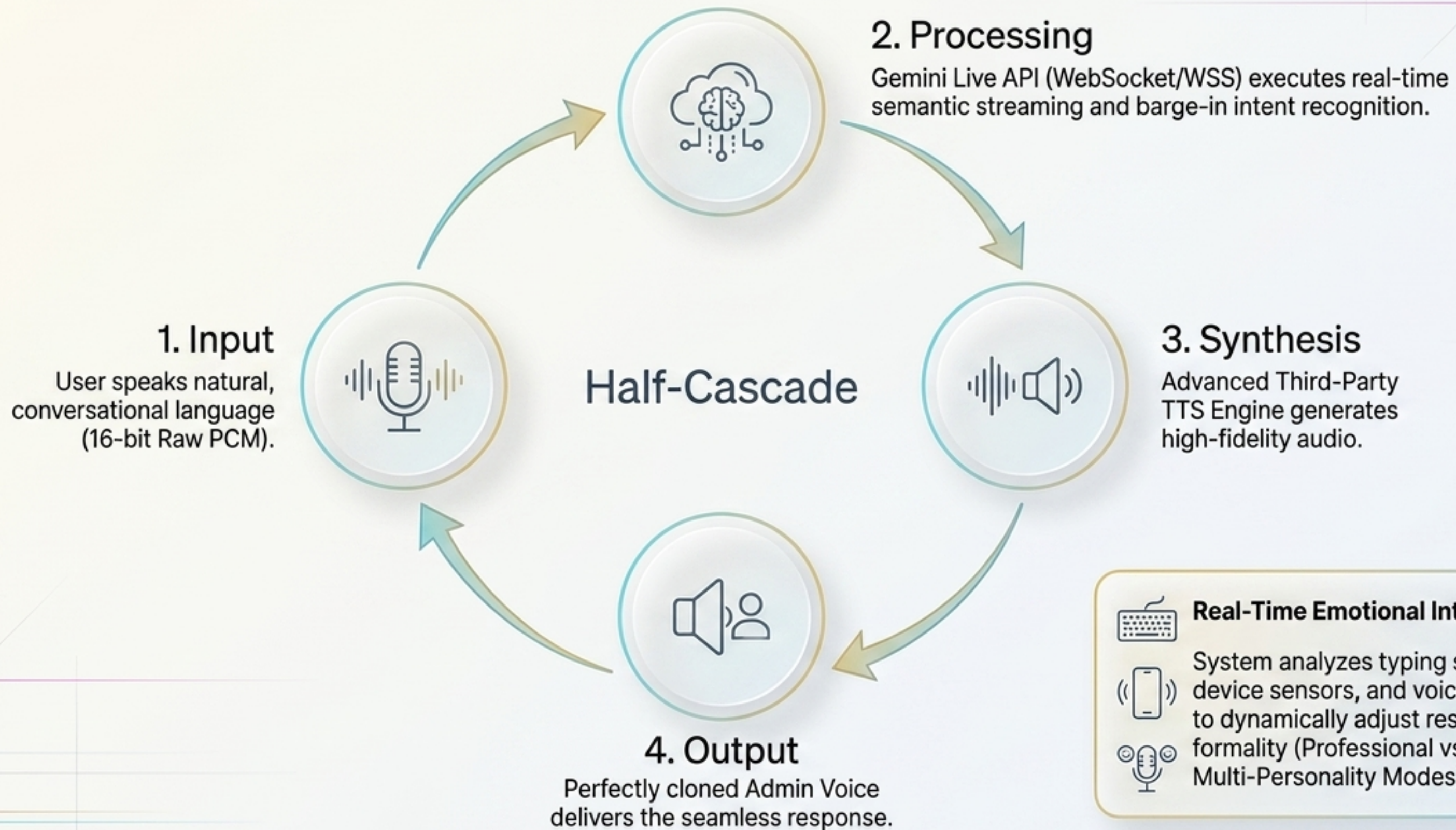
Bounded Execution

Actions are strictly confined to permitted apps via isolated scopes.

Transparent Audit Log

Every automated tap and swipe is recorded in an emergency-revokable local log.

State-of-the-Art Voice Architecture



Unit Economics & Infrastructure Setup

Built on Google Vertex AI Agent Builder & Gemini Ecosystem (2026 Ready).

Compute Node

\$0.0864

/ vCPU-hour

Memory

\$0.0090

/ GB-hour

Inference (Gemini 2.5 Flash)

\$0.30

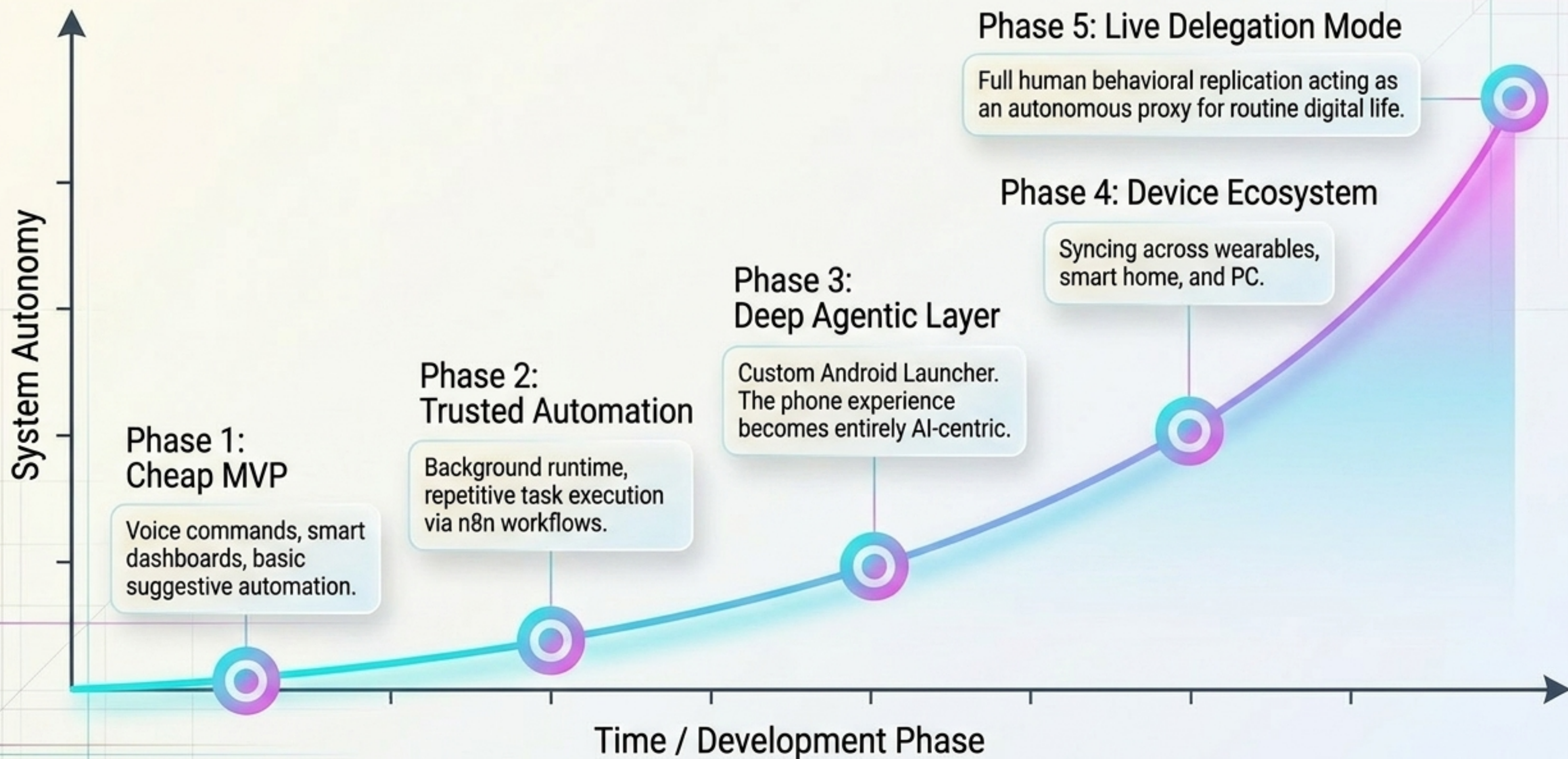
per 1M Input Tokens

\$2.50 per 1M Output Tokens

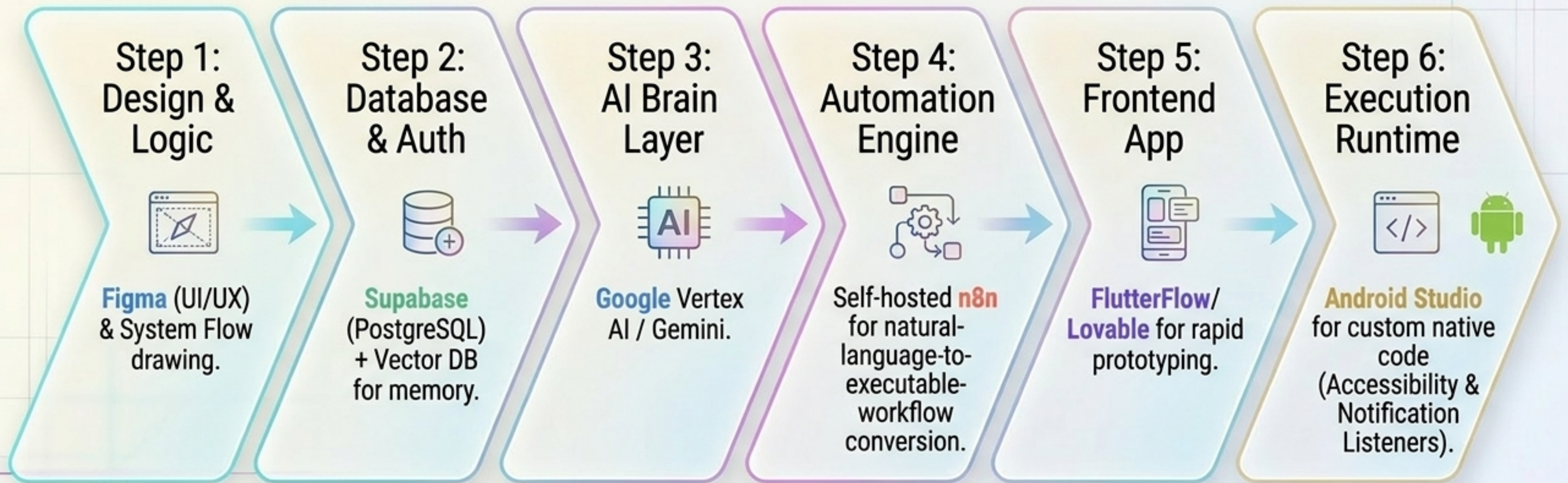
Strategic Optimization

Instead of training expensive custom LLMs from scratch, ASUM acts as a lightweight, highly profitable Orchestration Layer on top of existing world-class generative models, keeping monthly operational costs drastically low.

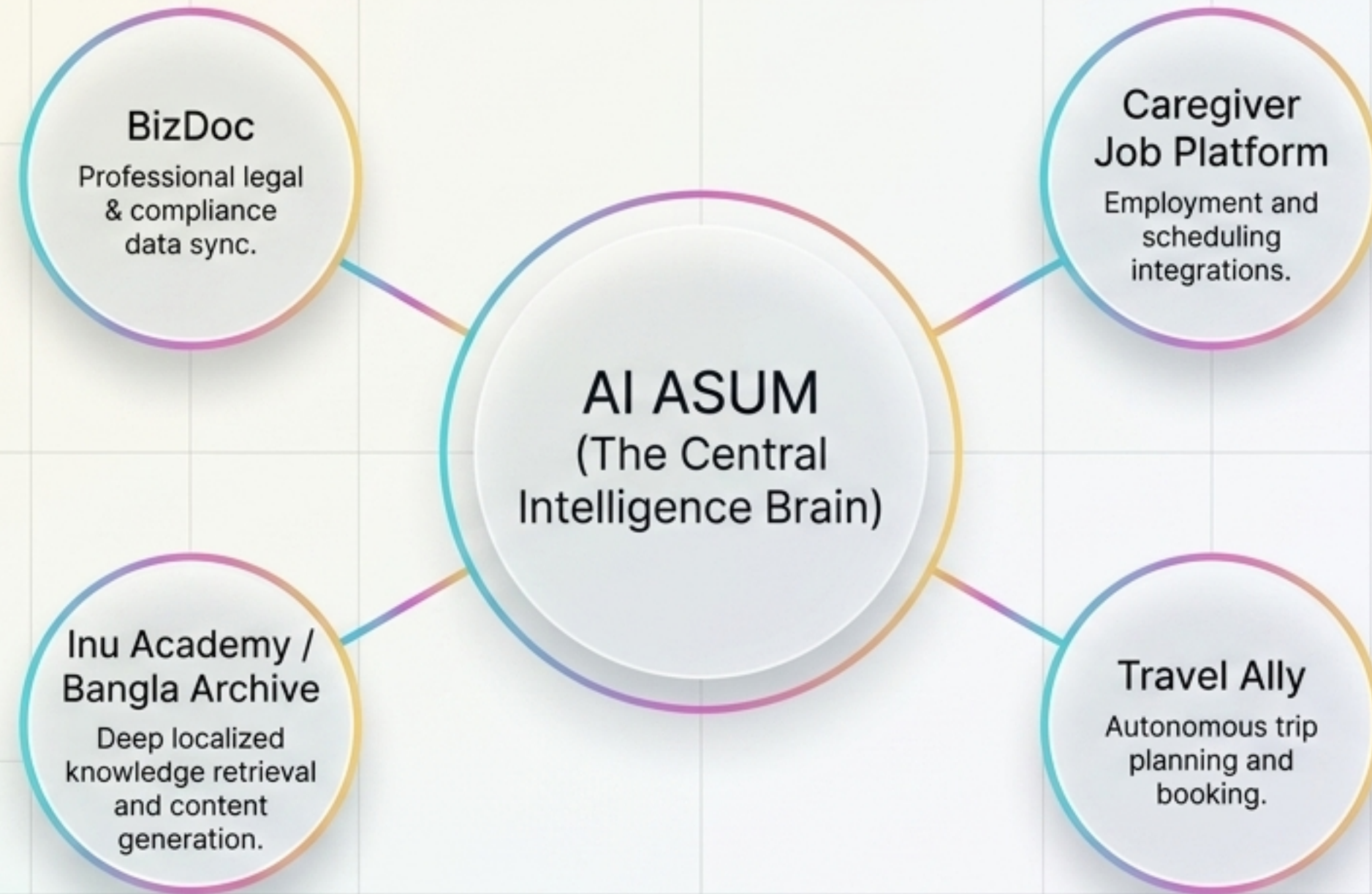
The Behavioral Clone Spectrum



The Practical Founder Stack: Rapid Go-to-Market



The Connected Brain: InnoSoln Ecosystem



ASUM is not a standalone product. It is the Central Brain of a multi-sector digital ecosystem, creating immediate day-one utility and proprietary data moats.



AI that learns YOU — not just prompts.

Models will become commodities. APIs will be ubiquitous. The true trillion-dollar asset of the future is the Personal Behavioral Intelligence Layer. We aren't building a chatbot; we are architecting your digital shadow.

ASUM™ — EMPOWERING YOUR DIGITAL SHADOW, SECURING YOUR REALITY. (FOUNDER: AKASH ISLAM)